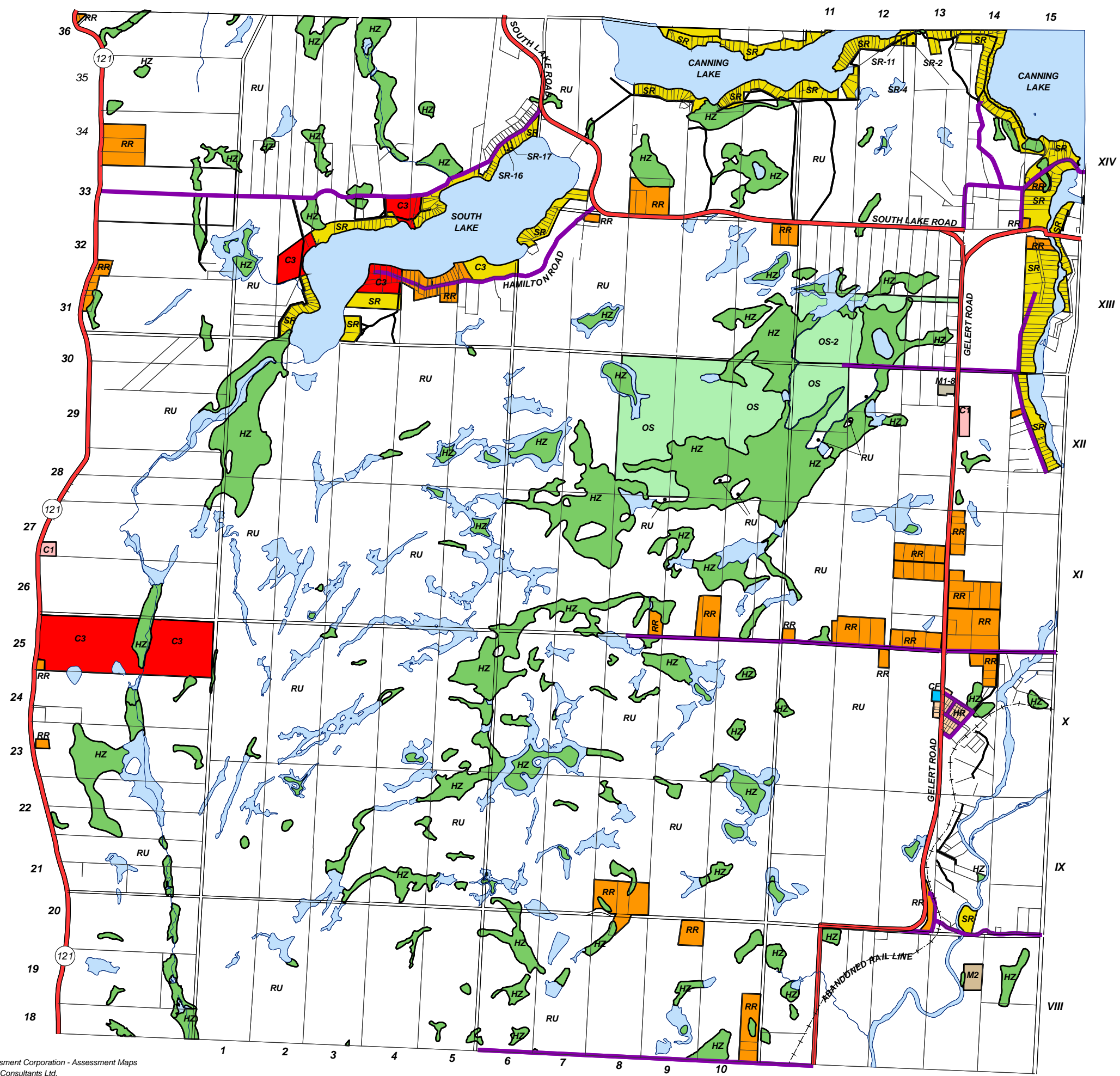
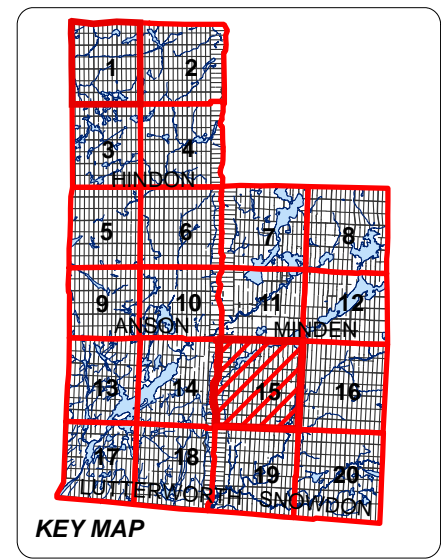


**TOWNSHIP OF MINDEN HILLS
ZONING BY-LAW 06-10
GEOGRAPHIC TOWNSHIP OF SNOWDON
SCHEDULE '15'**

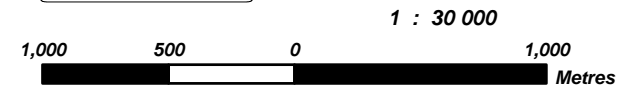


LEGEND

HZ HAZARD LAND	C4 VILLAGE COMMERCIAL
FW FLOODWAY	M1 GENERAL INDUSTRIAL
OS OPEN SPACE	M2 EXTRACTIVE INDUSTRIAL
RU RURAL	M3 WASTE DISPOSAL INDUSTRIAL
HR HAMLET RESIDENTIAL	LOTS-CONCESSIONS
RR RURAL RESIDENTIAL	35 HIGHWAYS
SR SHORELINE RESIDENTIAL	1 COUNTY ROADS
CF COMMUNITY FACILITY	TOWNSHIP ROADS
C1 HIGHWAY COMMERCIAL	PRIVATE ROADS
C2 GENERAL COMMERCIAL	HUNT CAMPS
C3 RECREATIONAL COMMERCIAL	

**SCHEDULE 15 TO BY-LAW NO. 06-10
AS AMENDED
CONSOLIDATED TO - MARCH 31, 2008**

**AMENDED By
BY-LAW:
07-37**



Projection - Transverse Mercator
NAD 1983 UTM ZONE 17N

Base Map Source:
Municipal Property Assessment Corporation - Assessment Maps
Robert Lehman Planning Consultants Ltd.
Ministry of Natural Resources - NRVIS Mapping 2002

NOTE:
This map is for general illustration purposes only.
For boundary interpretations, please contact the
Township of Minden Hills, Planning Department.

