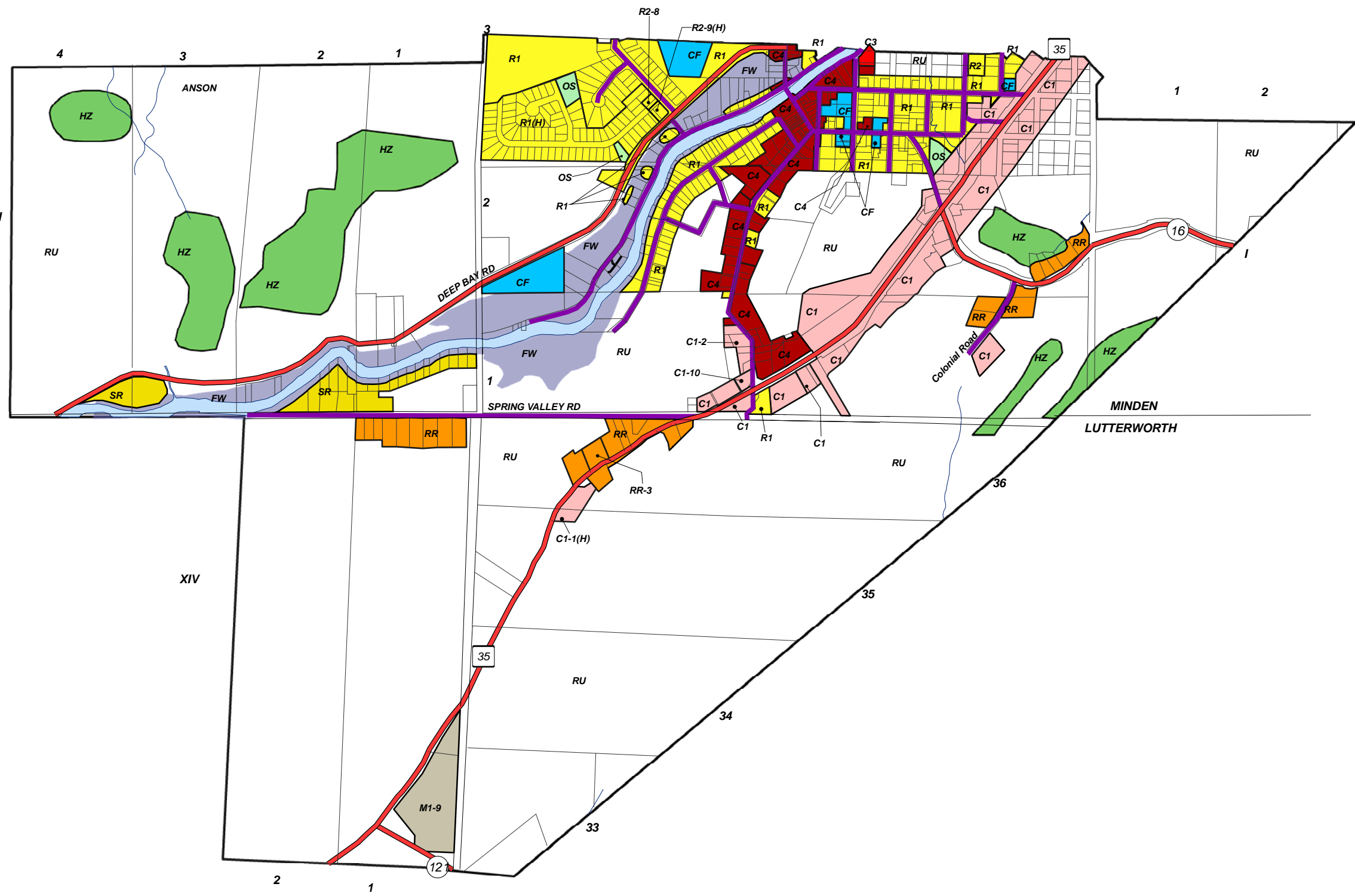
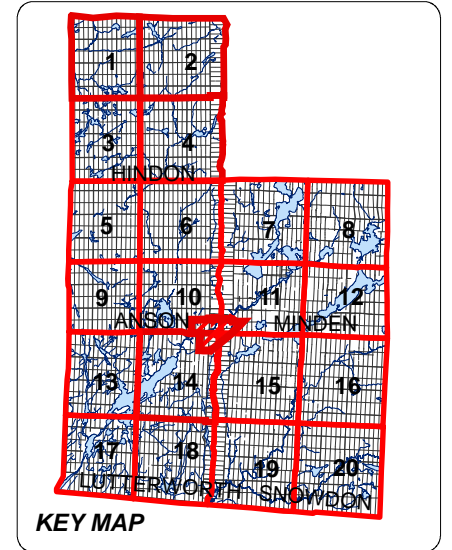
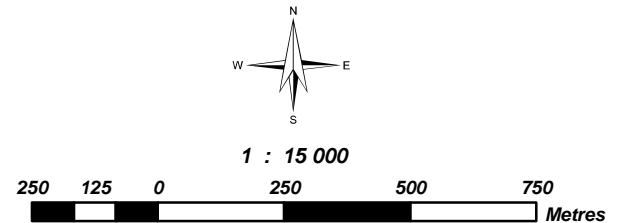


**TOWNSHIP OF MINDEN HILLS
ZONING BY-LAW 06-10
MINDEN URBAN AREA
SCHEDULE '22'**



LEGEND	
 HZ	HAZARD LAND
 FW	FLOODWAY
 OS	OPEN SPACE
 RU	RURAL
 R1	RESIDENTIAL TYPE ONE
 R2	RESIDENTIAL TYPE TWO
 HR	HAMLET RESIDENTIAL
 RR	RURAL RESIDENTIAL
 SR	SHORELINE RESIDENTIAL
 CF	COMMUNITY FACILITY
 C1	HIGHWAY COMMERCIAL
 C2	GENERAL COMMERCIAL
 C3	RECREATIONAL COMMERCIAL
 C4	VILLAGE COMMERCIAL
 M1	GENERAL INDUSTRIAL
 M2	EXTRACTIVE INDUSTRIAL
 M3	WASTE DISPOSAL INDUSTRIAL
	LOTS-CONCESSIONS
	35 HIGHWAYS
	1 COUNTY ROADS
	TOWNSHIP ROADS
	PRIVATE ROADS
•	HUNT CAMPS

**SCHEDULE 22 TO BY-LAW NO. 06-10
AS AMENDED
CONSOLIDATED TO - MARCH 31, 2008**



Projection - Transverse Mercator
NAD 1983 UTM ZONE 17N

NOTE:
This map is for general illustration purposes only.
For boundary interpretations, please contact the
Township of Minden Hills, Planning Department.



Base Map Source:
Municipal Property Assessment Corporation - Assessment Maps
Robert Lehman Planning Consultants Ltd.